

# 4685 BANDSAW



A TRADITION OF INNOVATION™



## HORIZONTAL RESAW

**O**liver's 4685 Hydraulic Single Head Horizontal Bandsaw Resaw has 16"W x 10"T capacity and is powered by a 30HP motor. For convenience, a return conveyor is added and a programmable controller automatically adjusts for cutting thickness. Conveyors and blade tensioning are both hydraulically controlled. This machine is highly accurate due to the hydraulic blade tensioning and pressured hold down rollers.

FOR A DEALER NEAR YOU, OR FOR MORE INFORMATION  
CALL OLIVER MACHINERY AT 1-800-559-5065  
OR VISIT [WWW.OLIVERMACHINERY.NET](http://WWW.OLIVERMACHINERY.NET)

# 4685

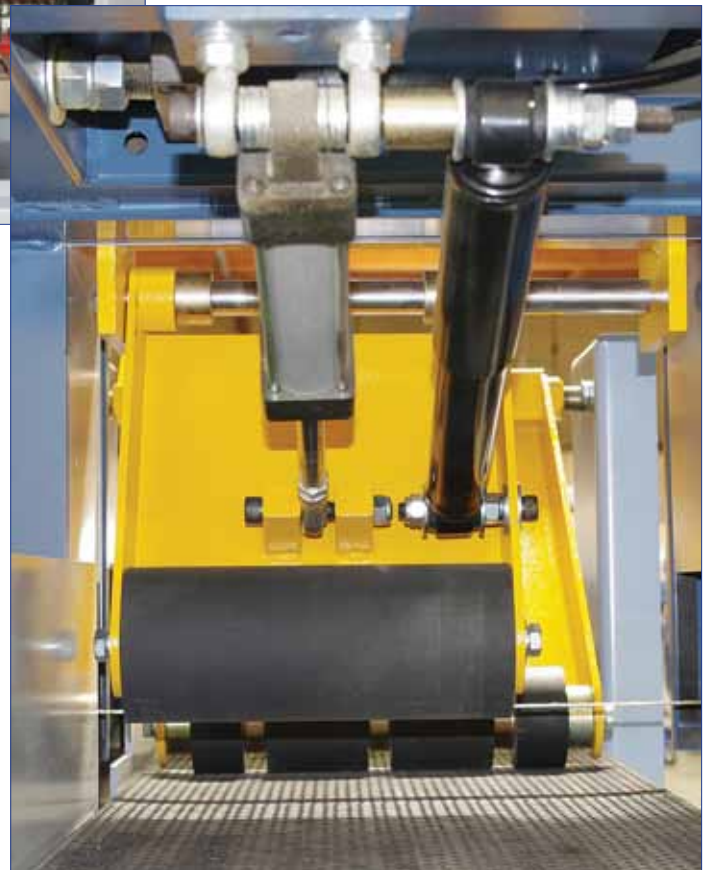
## HORIZONTAL BANDSAW



Smartly laid out electrical box with wiring diagram. Easily serviced with readily available off the shelf components from local retailers. A soft start has been added for the main motor.

### FEATURING

- Motor powered set works for ease of saw wheel elevation.
- Digital position controller permits accurate saw wheel height positioning & is programmable for repetitive cuts.
- Automatic blade tension is hydraulically controlled.
- Variable feed speed by hydraulic drive system.



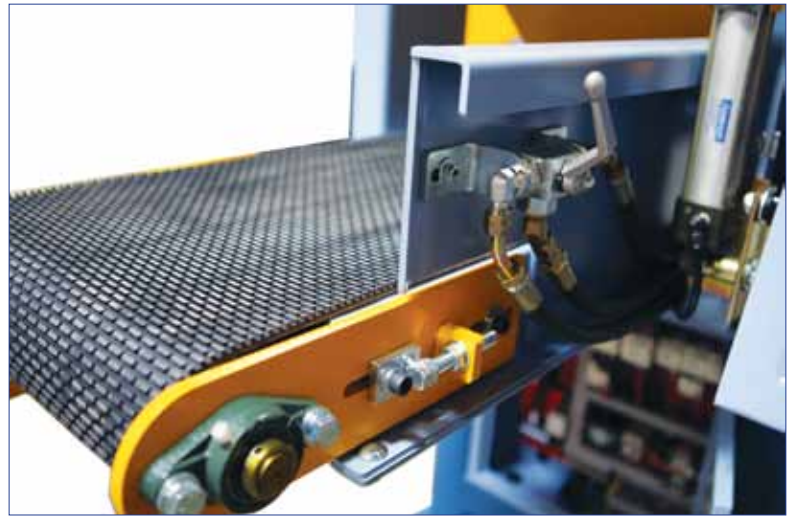
Rear hold down pressure is assisted by an adjustable air cylinder/ shock absorber system to ensure positive and accurate feeding.

# 4685

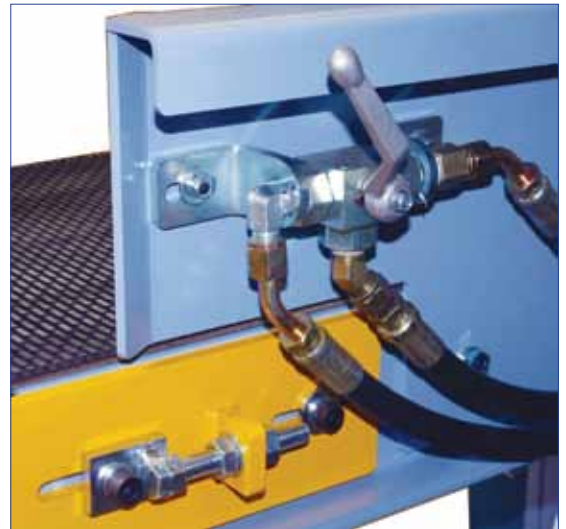
## HORIZONTAL BANDSAW



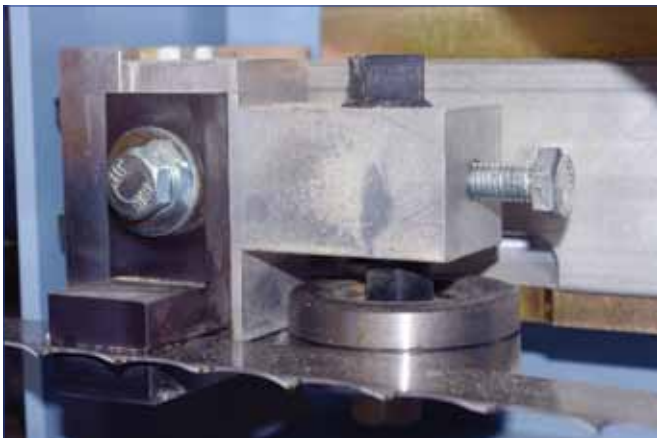
Ergonomic control panel is conveniently located. Digital PLC controls the cut thickness through a 1/4hp, 6 pole motor that raises or lowers the blade. The PLC can be programmed for repetitive cuts of a fixed dimension at a push of a single button.



Heavy duty rubberized conveyor working with the rubber hold down rollers ensure positive feeding with no slipping even with extra wide and hard woods.



Conveyor run/stop control is located next to the operator for safety and convenience.



Fully adjustable blade guides help dissipate the heat as well as keep the blade running true. Back-up thrust bearing is grooved to further assist in keeping the blade true.



# 4685

## HORIZONTAL BANDSAW

<b>Model No.</b>	<b>4685</b>
<b>Stock No.</b>	<b>4685.001 (30HP, 3Ph)</b>
Max Workpiece Size (W x H)	15.75" x 9.5"
Distance Blade to Conveyor Table	5/32" - 12"
Conveyor Belt Size	15.25" x 215.75"
Saw Wheel Diameter	Ø 28" x 1"(W)
Feed Speed	0~50ft/min
Saw Blade Size (L x W)	180" x 1"
Saw Wheel Motor	30HP
Hydraulic System Motor	In-feed: OMP250 / Out-feed: OMP160
Lifting Motor	1/4HP
Hydraulic Pressure	782 PSI
Dust Hood Diameter	Ø 4" x 2
Machine Weight	3,748 lbs
Packing Dimensions	113" x 89" x 81"
Optional Feature	Blade Speed Inverter



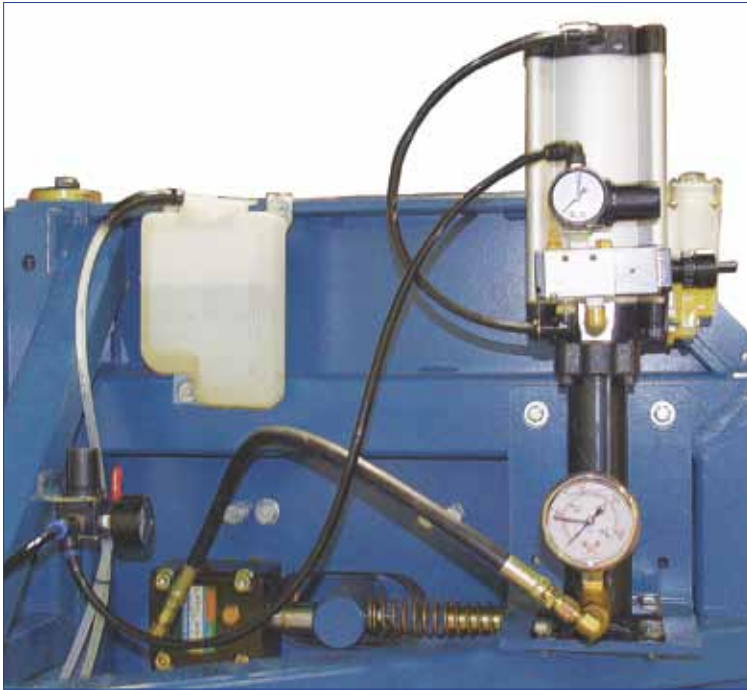
Linear bearing guides support the massive band wheels to ensure longevity and negate saw vibration.



Band wheels are machined from solid steel and precision balanced afterwards. Driven by a 30HP motor the momentum created by the solid steel wheels allows for the cleanest cut with no 'bogging down' on even the hardest of materials.

# 4685

## HORIZONTAL BANDSAW



Air over hydraulic system automatically tensions the saw blade for varying loads and can be adjusted for width of blade being used.



Front hold down pressure is adjustable by an air cylinder acting with a shock absorber to securely hold the material to the conveyor ensuring a superior cut.



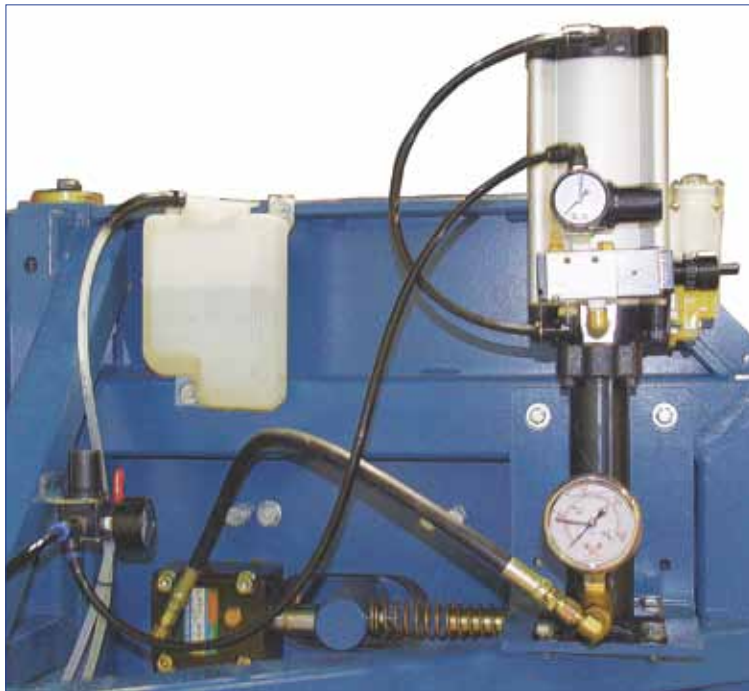
Massive 2-3/8" chrome steeled lift rods are guided through a 15" long housing to ensure rigid support of the band mill.



a) Full width rubber hold down wheels apply pressure directly before and after the blade to ensure stability at the cut point.  
b) A fully adjustable oil mist system keeps the blade cool and prolongs blade life.

# 4685

## HORIZONTAL BANDSAW



Air over hydraulic system automatically tensions the saw blade for varying loads and can be adjusted for width of blade being used.



Massive 2-3/8" chrome steeled lift rods are guided through a 15" long housing to ensure rigid support of the band mill.



Front hold down pressure is adjustable by an air cylinder acting with a shock absorber to securely hold the material to the conveyor ensuring a superior cut.