

WSM is pleased to introduce the BIG BRUTE –

The most rugged portable
machine in its class



It's also the smartest thanks to fully proportional hydraulic controls and programmable logic that maintain a consistent feed to the grinder for maximum production. The "Intelli-Feed" system is combined with WSM's mill duty design and construction, including hydraulic pivoting grinder housing for easy and safe maintenance access, heavy duty disc-type rotor with interchangeable tooling – allowing for different hammer types and configurations.



The BIG BRUTE features the largest feedroll in the industry, with an internal wheel drive for excellent climbing and feeding, and a Cat 3412E engine package with PT Tech wet clutch for outstanding power transmission.



To learn more about WSM's new BIG BRUTE portable grinder and our full line of stationary and portable recycling machinery, contact us at PO Box 5288, Salem OR 97304 USA. Phone: 1-800-722-3530 Fax: 1-503-364-1398 E-mail: sales@westsalem.com or visit our website @ www.westsalem.com



WSM “Big Brute” Portable Wood Recycler

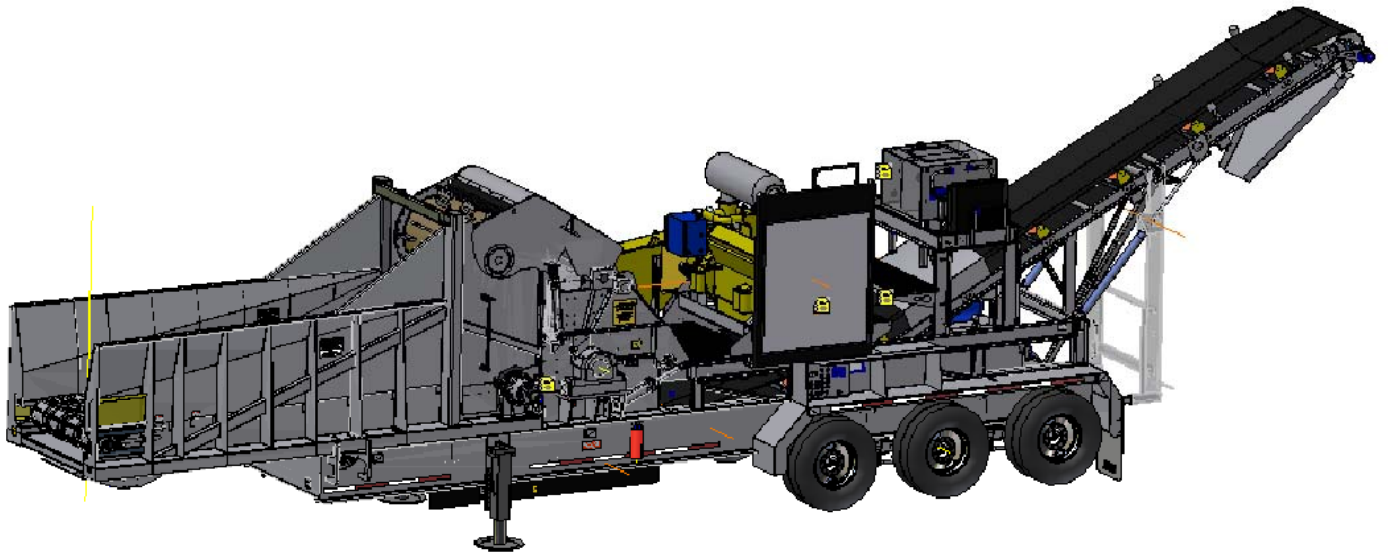
Specifications

OVERALL DIMENSIONS (TRAVEL POSITION)	- 10' W x 13'-6" H x 48' L (approx.)
WEIGHT (WITH FLUIDS)	- 96,000 lbs.
ENGINE/DRIVE SYSTEM	- 800-1000 HP CAT model 3412 diesel engine - Fuel tank: 500 U.S. gallons - Wet clutch with remote push-button engagement, “soft start”, and shock/overload protection - PLC controls – automatic load sensing
FEED SYSTEM	- Multi-strand drag chain with hydraulic drive and gearbox - 44” diameter powered feed roll with internal hydraulic drive
GRINDER	- 40” dia. x 64” wide rotor - 10” dia. shaft - Spherical roller bearings mounted in cast steel housings - Modular screen grates - Hinged anvil with shear pin - Interchangeable Tooling (IT) – multiple hammer options - T-1 steel interior wear liners - Modular, reversible, interchangeable screens
TRAILER	- Wide flange frame - Triple axle suspension - (6) tires mounted to aluminum wheels – Super Singles
DISCHARGE CONVEYOR	- 48” wide – cleated belt - 15’ clear discharge height - Folding conveyor – hydraulically operated
HYDRAULICS	- 150 gallon tank - (2) pressure compensated pumps - (1) gear pump
MAINTENANCE FEATURES	- Pivoting grinder housing - Maintenance access ladders & platforms - Hydraulic bearing removal - Modular and interchangeable grates and liners - Interior T-1 steel wear liners
SAFETY FEATURES	- Fluid Clutch for shock/overload protection - E-stop shutdown - LOP engine shutdown - HWT engine shutdown - Breakaway anvil with shear pin
OPTIONS	- Overhead self-cleaning magnet - Radio remote controls - Auxiliary air compressor - Water mist spray bar - Screening systems - Magnetic head pulley

West Salem Machinery Co.
665 Murlark Ave NW
Salem, OR USA 97304

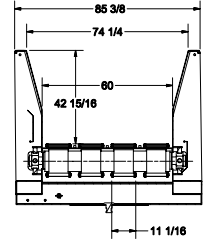
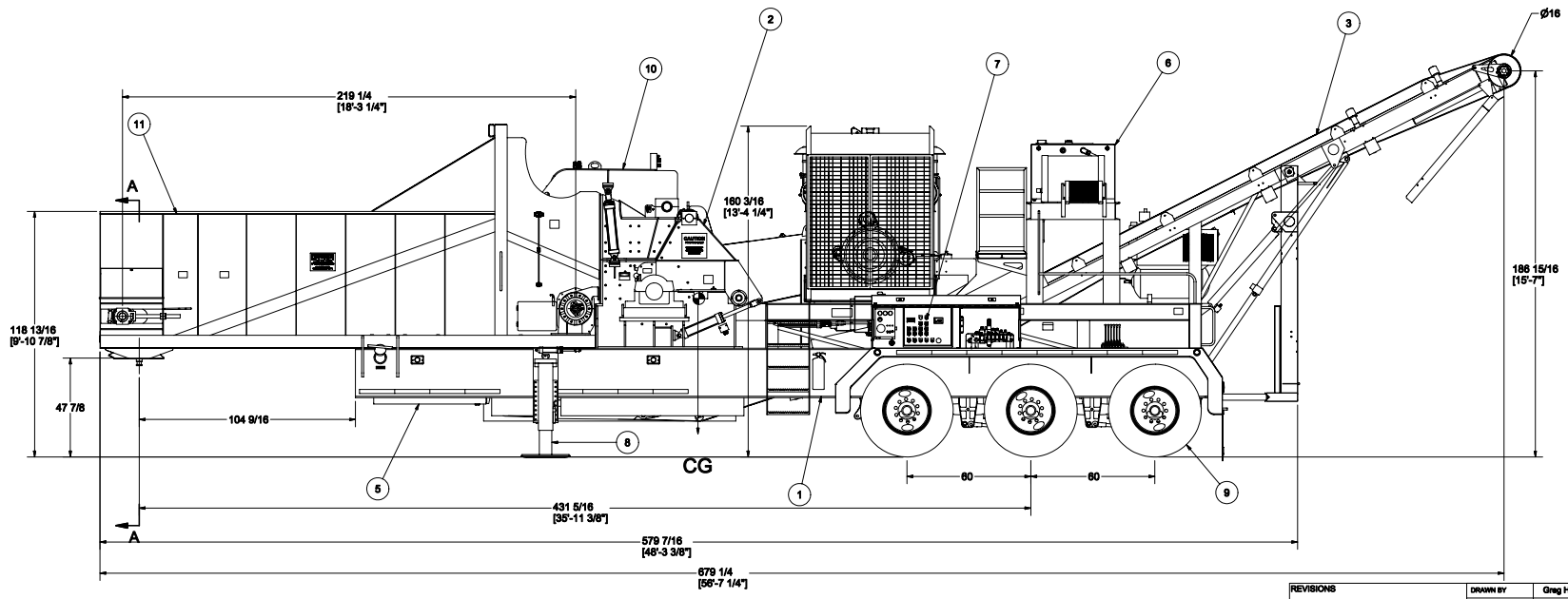
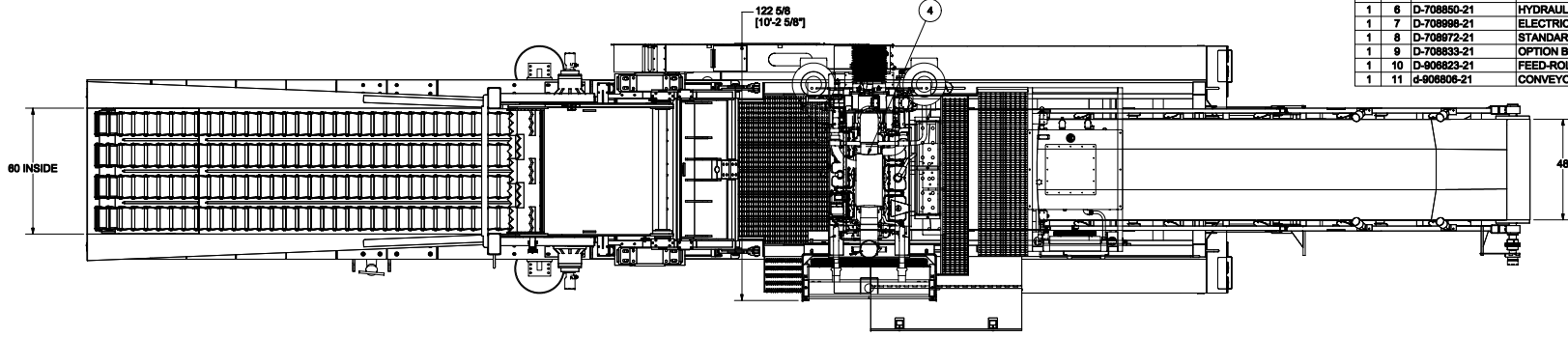
Phone: 800-722-3530

Fax: 503-364-1398





QTY	ITEM NO.	PART NO.	DESCRIPTION	D-709000-21 COMMENTS
1	1	D-708772-21	FRAME WELDMENT, #4084 PORTABLE	9326.593 lbmass
1	2	D-708999-21	HOG ASSEMBLY, 4064BH PORTABLE	17048.877 lbmass
1	3	D-708890-21	DISCHARGE CONVEYOR MODEL #4845	4679.487 lbmass
1	4	D-708854-21	POWER PLANT, 860 HP, CAT	7546.782 lbmass
1	5	D-708805-21	FUEL SYSTEM	624.187 lbmass
1	6	D-708850-21	HYDRAULIC ASSY & INST'L	2854.491 lbmass
1	7	D-708999-21	ELECTRICAL SYSTEM, 4084 PORTABLE	487.517 lbmass
1	8	D-708872-21	STANDARD ACCESSORIES, 4064 PORTABLE	1082.766 lbmass
1	9	D-708833-21	OPTION BOM, 4064 BRUTE	10758.873 lbmass
1	10	D-908823-21	FEED-ROLL, 4084	6904.685 lbmass
1	11	4-908806-21	CONVEYOR ASSY - CHAIN INFEED	18399.135 lbmass



SECTION A-A
SCALE 0.04 : 1

REVISIONS		DRAWN BY	DESIGNED BY	CHECKED BY	REFERENCE NO.	UNLESS SPECIFIED:		DIMENSIONS ARE IN		TOLERANCES		FINISH SURFACE		WEIGHT		REV	
		Greg H.	Greg H.			INCHES (mm)		DECIMAL .002 .08		FRACTIONAL 1/32 1/16		BROOK SHARP EDGES .005 .015		5048		1	1
						ANGULAR ± 1°		BREAK SHARP EDGES .005 .015		PROJ.		DWTG NO		D-709000-21			
						NEXT ASSEMBLY		QTY		5048		1		OF 1			
						WEST SALEM MACHINERY 665 MURLARK AVE. N.W. SALEM, OR. 97304				TITLE BIG BRUTE INSTALLATION, 4064, CHAIN INFEED				80,000 LBS.			

